

Silhouette Series



The shape of the future.

Available with or without Tab Tensioning System.

We changed the appearance of projection screens with a revolutionary case design. The SILHOUETTE's case conceals everything:

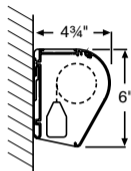
- Mounting fixtures
- Fasteners
- Optional controls
- Electrical connections
- Viewing surface retracts completely inside case



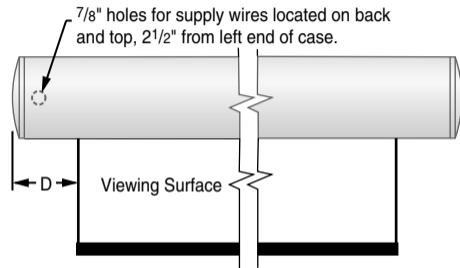
The innovative case installs cleanly, and the front fascia is easily removable for access to the inside components. Its slender fascia and endcaps are made of gently radiused aluminum and present a strikingly modern appearance. There is no need to conceal the SILHOUETTE—it will complement the other high tech equipment in your room.

(SILHOUETTE SERIES continued on page 15)

Silhouette Case Dimensions/ Method of Installation



Series V and C dowel shown above; Series E and M surface and dowel shown at right. Both dowels retract completely inside case.



Silhouette	Operation	D
Series E	Motorized	5 ⁵ / ₁₆ "
Series M	Spring	1 ¹ / ₂ "
Series V	Motorized, Tab Tensioned	Varies
Series C	Crank, Tab Tensioned	Varies

Silhouette/Series V—

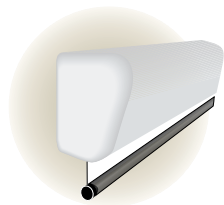
Motorized screen features DRAPER'S TAB TENSIONING SYSTEM, with choice of M1300, M2500 or HiDEF GREY viewing surface. 12" of black drop at top of screen is standard with SERIES V.



Silhouette/Series V

Silhouette/Series E—

Motorized screen in your choice of a conventional viewing surface: fiberglass matt white, glass beaded, HIGH CONTRAST GREY or acoustically transparent AT1200 or AT GREY.



Silhouette/Series E & M

Silhouette/Series M—

Manual, spring-roller operated screen in your choice of a conventional viewing surface: fiberglass matt white, glass beaded or HIGH CONTRAST GREY.



Silhouette/Series C

Silhouette/Series C—

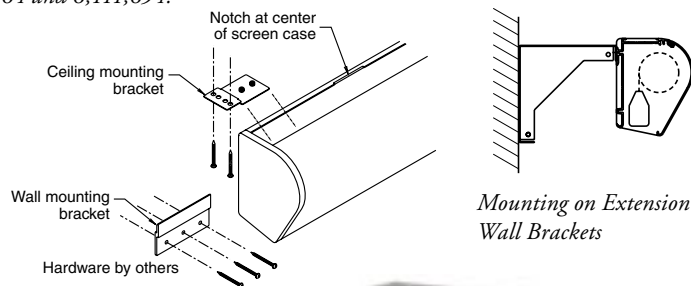
Manual, crank-operated screen features DRAPER'S TAB TENSIONING SYSTEM, with choice of M1300, M2500 or HiDEF GREY viewing surface. 12" of black drop at top of screen is standard with SERIES C.



Silhouette/Series E installation in Lapham Hall, University of Wisconsin-Milwaukee. Dealer: SPL Integrated Solutions. Photography: Barry Rustin, Evanston, IL. U.S. Patent Nos. 5,296,964 and 6,111,694.

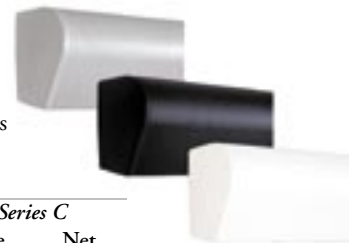
System Options

- **Extra Drop**—Additional drop optional, either surface color or black. (Black is standard for SERIES V. Surface color is standard for SERIES E and M in AV format, black in other formats.) Extra drop will increase the overall length of the case of a SERIES V and SERIES C.
- **Black Masking Borders**—Borders are optional for SERIES E in AV format. Borders are standard for SERIES E in all other formats and for all SERIES V screens.
- **Control Options**—Refer to page 6. Controls may be built into case and will increase the overall length of the case.



Mounting on Extension Wall Brackets

- **Case Finishes**—Choose dove grey (standard), black or white lightly textured finish. Dowels on all series retract completely inside case.



Dimensions & Data—Silhouette Series

	Size H x W	Series M		Series E		Series V		Series C	
		Case Length	Net Wt. (lbs.)	Case Length*	Net Wt. (lbs.)	Case Length*	Net Wt. (lbs.)	Case Length*	Net Wt. (lbs.)
<i>AV Format</i>	50" x 50"	52½"	18	61½"	27	72¾"	33	72¾"	30
	60" x 60"	62½"	21	71½"	29	83¾"	35	83¾"	32
	70" x 70"	72½"	25	81½"	34	93¾"	40	93¾"	37
	84" x 84"	86½"	28	95½"	40	109"	46	109"	43
	72" x 96"	99"	29	108"	48	119¾"	57	119¾"	54
	96" x 96"	99"	33	108"	53	122½"	59	122½"	56

	Nominal Diagonal	Image Area H x W (E/M)	Series M		Series E		Series V		Series C		
			Case Length	Net Wt. (lbs.)	Case Length*	Net Wt. (lbs.)	Image Area H x W (V/C)	Case Length*	Net Wt. (lbs.)	Case Length*	Net Wt. (lbs.)
<i>NTSC Video Format (4:3)</i>											
	6'	42½" x 56½"	62½"	20	71½"	26	42½" x 56½"	79¼"	39	79¼"	36
	7'	50" x 66½"	72½"	24	81½"	31	50" x 66½"	89¼"	43	89¼"	40
	100"	60" x 80"	86½"	25	95½"	37	60" x 80"	103¾"	47	103¾"	44
	10'	69" x 92"	99"	29	108"	45	72" x 96"	119¾"	54	119¾"	51

	Nominal Diagonal	Image Area H x W (E/M)	Series M		Series E		Series V		Series C		
			Case Length	Net Wt. (lbs.)	Case Length*	Net Wt. (lbs.)	Image Area H x W (V/C)	Case Length*	Net Wt. (lbs.)	Case Length*	Net Wt. (lbs.)
<i>HDTV Format (16:9)</i>											
	65"	31¾" x 56½"	62½"	19	71½"	25	31¾" x 56½"	77½"	39	—	—
	73"	36" x 64"	72½"	23	81½"	30	36" x 64"	84¾"	42	—	—
	82"	40½" x 72"	77"	24	86"	33	40½" x 72"	93¾"	47	—	—
	92"	45" x 80"	86½"	25	95½"	37	45" x 80"	102¾"	50	102¾"	47
	106"	52" x 92"	99"	29	108"	45	52" x 92"	114¾"	54	114¾"	51

*Optional built-in controls will increase length of case. In Series V and C, additional drop also increases case length.