

# Roadie HD+35K

Audience events  
Auditoriums  
Houses of worship  
Large venues  
Renters/Stagers



## World's brightest projector

There's only one projector with the brightest, highest resolution HD image – the Christie Roadie HD+35K. Rounding out Christie's expansive 3-chip DLP® product line up, there's no comparison for resolution, brightness or performance.

Producing 32,500 ANSI lumens (35,000 center lumens), this newest Roadie features Christie's unique, flexible split-body design with separate switching lamp ballast. The Roadie HD+35K includes a rear air exhaust hood for improved stackability and a new motorized lens mount enables you to focus and adjust lens position using a remote control.

With native 2048 x 1080 HD resolution and 10-bit image processing, images are simply stunning in their size, brilliance and quality. The user-replaceable lamps can be automatically aligned at the push of a button and user-friendly controls ensure easy maintenance and servicing. Along with built-in body handles for handling and rigging or an optional stacking/rigging frame this tough, manageable projector is built for true road worthiness – frequent transport and quick set-up.

**CHRISTIE®**



◀ Single-button direct key access, auto set-up and power-up features put real control at your fingertips.

Motorized lens mount enables users to adjust focus and lens position using a remote control. ▶



The Christie Roadie HD+35K delivers superior image quality and enables users to stack, blend and color-match multiple projectors.

### Image quality

3-chip DLP® technology, high-quality optics and world-class 10-bit image processing.

With low maintenance and highly reliable (>100,000 hours) DLP® technology, the Roadie HD+35K delivers:

- High brightness
- Repeatable color
- Excellent uniformity
- High contrast
- Excellent fill ratio
- Control capabilities in a native widescreen format

### Proven 10-bit native HD processing

Utilizing the proven 10-bit processing in our 2K resolution products, the Roadie HD+35K continues to exceed expectations in image quality and reproduction. High bandwidth supports additional functionality such as Picture-in-Picture and seamless switching between sources.

### Serviceability

Managing the operation and maintenance of the Roadie HD+35K is easy. Field-alignable DMDs and a cleanable optical engine give you full control of the projector. Replacement lamp costs are low and we offer the best warranty on the market – 3 years parts and labor (including light engine).

**3 YEAR WARRANTY**

CHRISTIE LCD,  
1-CHIP AND 3-CHIP DLP®

### Competitive advantage

- 35,000 lumens at 2048 x 1080 resolution
- Brightest and highest resolution 3-chip DLP® technology available today
- Superior image quality and ability to stack, blend, and color-match multiple projectors
- Separate projection head and lamp ballast
- Built-in carrying and rigging handles
- Motorized lens mount
- Stackable (optional stacking frame for up to 105,000 lumens)
- High-performance, inexpensive bubble lamp, with auto-alignment

### High performance electronics

Christie-designed electronics with HD 4:4:4 capabilities and Digital Black Level control that can be used with built-in edge blending are key strengths of the Roadie HD+35K. Additional features include seamless switching, Picture-in-Picture, LiteLOC™ and a new motorized lens mount. The built-in RJ45 networking port also enables ChristieNET™ to be used for monitoring and control to provide complete asset management. The video processing, with artifact-free video and excellent color and contrast, produces unparalleled images.



◀ The spectacular opening of Atlantis, The Palm – situated on Dubai’s luxurious man-made island of Palm Jumeirah in Dubai – took the form of a pageant in which all the high-definition content projection (which helped to tell the story of Atlantis, the lost city) was handled by 42 Christie Roadie and 10 Roadster projectors.



Roadie ducted exhaust kit 113-107109-XX  
Extraction fan kit 38-814008-XX

◀ The combination of the Roadie ducted exhaust kit and extraction fan kit directs hot air away from the projector to prevent overheating when using the Roadie in an enclosed room.



### Enhanced power

Christie RoadTools™ is a FREE robust suite of software tools that enables faster system set up, improved projector management and increased productivity. RoadTools™ works with 3-chip DLP® and 1-chip DLP® projectors using Christie's exclusive KoRE™ technology electronics.

### LiteLOC™

The LiteLOC™ feature automatically manages your display's brightness levels over time so that you can match the brightness of a multiple projector system in tiled or blended arrays. This feedback system continuously monitors lamp brightness, so that as the lamp goes through its natural brightness decay, the system increases the lamp power in order to maintain consistent brightness.

Lens	Part number
0.8:1 Fixed	113-104106-XX
1.1:1 Fixed	38-809071-XX
1.25 – 1.45:1 Zoom	38-809073-XX
1.45 – 1.8:1 Zoom	38-809074-XX
1.8 – 2.4:1 Zoom	38-809075-XX
2.2 – 3.0:1 Zoom	38-809076-XX
3.0 – 4.3:1 Zoom	38-809077-XX
4.3 – 6.0:1 Zoom	38-809072-XX
5.5 – 8.5:1 Zoom	38-809078-XX

#### Specialty lenses

38-809054-XX  
Anamorphic lens 1.26X



108-111102-XX  
Motorized anamorphic lens mount



Inputs	Part number
Dual SD/HD-SDI input	38-804656-XX
DVI input	38-804635-XX
Miscellaneous accessories	Part number
Anamorphic lens mount	38-813019-XX
High contrast aperture kit	38-813028-XX
Lamp safety kit	598900-XX
Remote IR sensor	104-106101-XX
Rigging frame	38-814007-XX
Rigging clamps	113-102101-XX
Wired remote control	104-109001-XX
Roadie ducted exhaust kit	113-107109-XX
Extraction fan kit	38-814008-XX
7kW switching ballast	38-814001-XX
Filter replacement (6 Pack)	03-001981-XX
Christie Twist™	108-103101-XX
Christie Twist™ Pro software upgrade	108-247101-XX
Christie AutoStack™	108-308101-XX
Cable kits	Part number
Cable kit 100ft	38-814006-XX
Cable kit 50ft	38-814005-XX
Cable kit 25ft	38-814004-XX
Cable kit 6ft	38-814003-XX

Description	Lamp	Brightness	Typical lamp life	Part number
CDXL 60 Lamp	6.0kW	32,500 ANSI lumens (35,000 center lumens)	1000 hrs (750 hrs at 6.6kW)	003-000601-XX
CDXL 45 Lamp	4.5kW	27,000 ANSI lumens (29,000 center lumens)	900 hrs	003-000600-XX
CDXL 30 Lamp	3.0kW	18,000 ANSI lumens (19,500 center lumens)	2500 hrs	003-000599-XX
CDXL 20 Lamp	2.0kW	12,000 ANSI lumens (13,000 center lumens)	3500 hrs	003-000598-XX



◀ CDXL high performance short-arc Xenon lamps offer increased brightness in the same form factor as standard Xenon grade lamps.

In total, there are two input card slots available on the Roadie, one is equipped with a standard Dual SD/HD-SDI input card.





▲ Separate projection head and switching lamp ballast provide handling and rigging/installation flexibility. The separate units enable smaller, lighter, more manageable parts.



▲ The ballast can be stored up to 100ft away from the projection head (cable kit dependent).



▲ A cable kit is used to connect the 7kW switching lamp ballast to the projection head for greater installation flexibility. Cable kits are available in 6ft, 25ft, 50ft and 100ft lengths.



▲ In 2008, international beer label, SKOL, commissioned a spectacular display of artistic images on a 100-foot diameter ferris wheel on Rio de Janeiro's famous Copacabana Beach. The project, entitled "Olhar Redondo" (translated as "look around") and a tribute to Rio's patron saint, Saint Sebastian, received the "Most Innovative Use of Technology for an Outdoor Event" title presented during the 2009 InfoComm/LSA Staged Events Awards.

Known for their high brightness and rugged design, stacked Christie Roadie projectors illuminated the Ferris wheel, located more than 154 feet away. The projectors rested on a 39-foot scaffolding tower constructed to resist the area's high winds, which can reach up to 80 mph.

Christie projectors were selected for this display because of our excellent customer support record and the exceptional ruggedness and reliability of our products.

Photo courtesy of Jose Roberto Couto.



### Christie Twist™ 108-103101-XX

Christie Twist™ enables seamless white and black level edge-blending of multiple curved images, faster and more easily than through traditional, manual methods. Controlled by an easy-to-use GUI, you can expertly control and edge blend or stack multiple curved images to fit virtually any dimension or shape display. Available as an option, Christie Twist™ ensures that Roadie HD+35K projectors work with value-added accessories, such as Christie AutoStack™.

- Allows warping, blending and masking of projectors with up to a 10 x 10 grid
- Additional functions: edge blending with curved edge contours, anti-aliasing filtering, sharpness filtering
- Display control points and warp lines on projector – a test pattern is generated in the projector that shows the warp grid and identifies the warp control points
- Add, delete, copy and paste of multiple warps, blends and masks on a single projector
- Control up to 6 projectors from any PC via Ethernet or RS-232 using the Christie Twist™ virtual remote



### Christie AutoStack™ 108-308101-XX

Set up faster, professional quality, multiple-projector displays in just minutes. Part of the Christie Truelmage™ suite of integrated solutions, Christie AutoStack™ is a vision-based solution that enables stacking and blending of projector arrays in a fraction of the time it takes manually. Christie AutoStack™ is available for any projector equipped with Christie Twist™.

Up to 12 stacked and blended projectors can be automatically calibrated with unsurpassed accuracy, in as little as 2 minutes per projector. The software driven camera-based system supports various screen sizes and aspect ratios, utilizing screen points for quick geometric calibration.



Christie AutoStack™ provides the opportunity to include complex projector arrays in both rental staging and fixed installs without increasing time, labor or resources. Now, professional quality results can be achieved with minimal experience required, enabling you to utilize multiple projection arrays for impact, brightness or redundancy without excess time and labor.

- Blend and stack a typical 2 x 2 configuration in approximately 8 minutes (2 minutes per projector)
- Intuitive user interface with real-time camera feedback
- Supports up to 2 x 3 blended and stacked configurations for a total of 12 projectors
- Rugged high resolution industrial charge coupled-device (CCD) camera
- Ships standard with rugged travel carrying case

#### ▼ Rigging frame 38-814007-XX

For rigging or "flying" in a suspended installation, and/or for stacking two projectors together.

#### ▼ Rigging clamps 113-102-101-XX

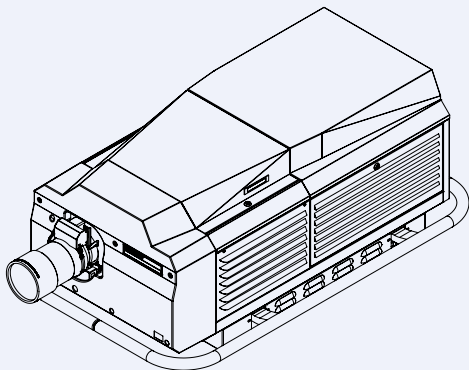
Clamps can be used on the rigging frame or directly on the Roadie HD+35K.



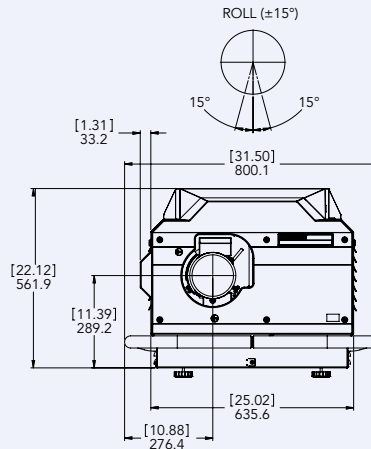
Christie Roadie HD+35K		
Image	brightness	32,500 ANSI lumens (35,000 Center lumens) – 6.0kW Lamp 27,000 ANSI lumens (29,000 Center lumens) – 4.5kW Lamp 18,000 ANSI lumens (19,500 Center lumens) – 3.0kW Lamp 12,000 ANSI lumens (13,000 Center lumens) – 2.0kW Lamp
	contrast	2000:1 (full on/off)
	uniformity	90% brightness uniformity
	Display	type
	native resolution	DC2K (2048 x 1080)
Lamp	type	Xenon bubble*
	typical lifetime	6.0kW 1000 hrs (750 hrs at 6.6kW) • 4.5kW 900 hrs • 3.0kW 2500 hrs • 2.0kW 3500 hrs
Input	signals	HDTV formats VGA through to QXGA (2048 x 1536) • Accepts all current HDTV/DTV formats • Multi-standard video decoder • Horizontal and vertical scaling, all inputs
	pixel clock	210MHz
	scan rates	Horizontal: 15kHz to 120kHz • Vertical: 23.97Hz to 150Hz
Inputs, control and networking		RGBHV/YpBPr: 5 BNC • DVI-I Analog / Digital RGB/YpBPR (HDCP) • S-video • Composite video • 2 RS-232 ports • 3 RS-422 ports • GPIO port • Ethernet (10/100) RJ45 with ChristieNET™ connectivity • Built-in backlit LCD keypad • Front and rear IR receivers • 2 input slots for analog/digital modules
Accessories	standard	Dual SD/HD-SDI input card • Detached 7kW switching lamp ballast • IR Remote keypad (with optional wired connection) • Line cord • 6ft ballast cable • Handles for carrying and rigging • User manual
	optional	Input cards – DVI, Dual SD/HD-SDI • Christie Twist™ • Remote IR sensor • Wired remote control • Rigging frame • Rigging clamps • Lamp safety kit • High contrast aperture kits • 6ft, 25ft, 50ft or 100ft ballast cable kit • Service manuals • KoRE 10-bit librarian software • Filter replacement packs • See the Christie 3-chip DLP® Accessories guide for the complete list of accessories
Lens mount	type	Tool-free lens insertion system • Boresight adjustable
	motorized	Horizontal and vertical offset • Focus • Zoom
Lens options	fixed	0.8:1 <sup>1</sup> • 1.1:1 <sup>2</sup>
	zoom	1.25-1.45:1 <sup>3</sup> • 1.45-1.8:1 <sup>4</sup> • 1.8-2.4:1 <sup>4</sup> • 2.2-3.0:1 <sup>4</sup> • 3.0-4.3:1 <sup>4</sup> • 4.3-6.0:1 <sup>4</sup> • 5.5-8.5:1 <sup>3</sup>
	offsets	<sup>1</sup> ±45% V, ±15% H • <sup>2</sup> ±74%V, ±21% H • <sup>3</sup> ±100% V, ±35% H • <sup>4</sup> ±53% V, ±17% H
Power requirements		
Projector head	operating voltage	Single phase 200-240 VAC @50/60Hz
	max current	3A max
Ballast	type	Detached 7kW switching lamp ballast
	operating voltage	3-phase 200-230 VAC @50/60Hz
	max current	24A per phase max
	operating voltage	3-phase 380-415 VAC @50/60Hz
	max current	16A per phase max
Dimensions		
Projector head	dimensions	(L x W x H): 53.6 x 31.5 x 22.8" (1362 x 800 x 577mm)
	shipping dimensions	(L x W x H): 65 x 41 x 35" (1650 x 1040 x 890mm)
	weight	360lb (163kg)
	shipping weight	460lb (209kg)
Ballast	dimensions	(L x W x H): 21 x 18 x 21" (533 x 457 x 533mm)
	shipping dimensions	(L x W x H): 28 x 25 x 31.5" (710 x 635 x 800mm)
	weight	110lb (50kg)
	shipping weight	145lb (66kg)
Optional rigging frame	dimensions	(L x W x H): 59.4 x 33.5 x 25.7" (1510 x 851 x 653mm)
	shipping dimensions	(L x W x H): 54 x 32 x 10" (1372 x 813 x 254mm)
	weight	110lb (50kg)
	shipping weight	166lb (75kg)
Operating environment		Temperature: 5 to 35° C (40 to 95° F) • Humidity: 20 – 80% non-condensing
Regulatory		UL/CSA/IEC 60950 (3rd edition) • FCC Class A, CE • This product conforms to all relevant European directives, standards, safety, health and environmental concerns • RoHS, WEEE
Limited warranty		3 years parts and labor (including light engine) • Contact an authorized Christie representative for full details of our limited warranty

\* User replaceable bulb

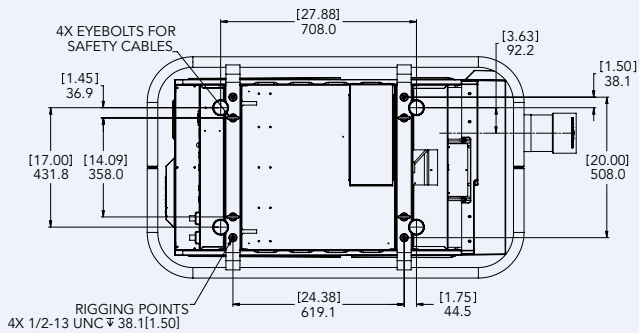
Angle view



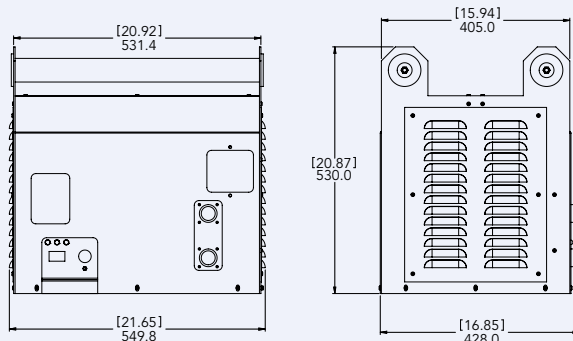
Front view



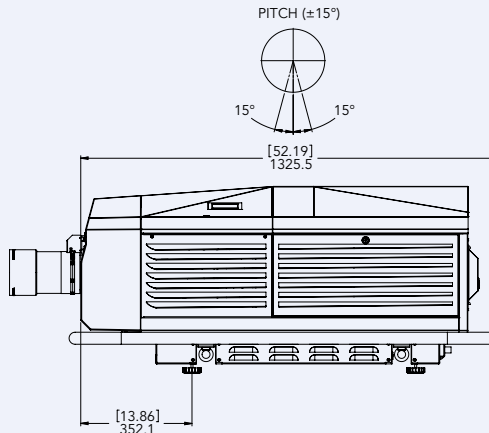
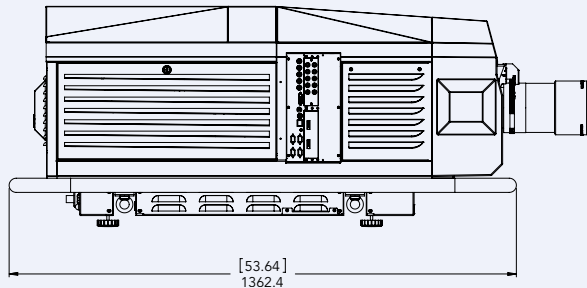
Bottom view



7kW Switching ballast



Side views



#### Corporate offices

---

Christie Digital Systems USA, Inc  
USA – Cypress  
ph: 714 236 8610

Christie Digital Systems Canada, Inc.  
Canada – Kitchener  
ph: 519 744 8005

#### Independent sales consultant offices

---

Spain  
ph: +34 91 633 9990

Italy  
ph: +39 (0) 2 9902 1161

South Africa  
ph: +27 (0) 317 671 347

#### Worldwide offices

---

United Kingdom  
ph: +44 (0) 118 977 8000

Germany  
ph: +49 2161 664540

France  
ph: +33 (0) 1 41 21 44 04

Eastern Europe and  
Russian Federation  
ph: +36 (0) 1 47 48 100

United Arab Emirates  
ph: +971 (0) 4 299 7575

India  
ph: (080) 41468941 – 48

Singapore  
ph: +65 6877 8737

China (Shanghai)  
ph: +86 21 6278 7708

China (Beijing)  
ph: +86 10 6561 0240

Japan (Tokyo)  
ph: 81 3 3599 7481

Korea (Seoul)  
ph: +82 2 702 1601



ISO 9001



ISO 14001



For the most current specification information, please visit [www.christiedigital.com](http://www.christiedigital.com)



Copyright 2010 Christie Digital Systems USA, Inc. All rights reserved. All brand names and product names are trademarks, registered trademarks or tradenames of their respective holders. Canadian manufacturing facility is ISO 9001 and 14001 certified. Performance specifications are typical. Due to constant research, specifications are subject to change without notice. Printed in Canada on recycled paper. 2733 Aug 10

**CHRISTIE®**