

# The New Standard in LCD Rack Monitor

PRM-902A

PRM-483A



**HD/SD**  
MULTI - CHANNEL  
LCD MONITOR

2009 Product Line up



# HD/SD MULTI - CHANNEL LCD MONITOR

## PRM-902A



### Features

- Multi-Format Support (480i,576i,720P,1080i,1080P,1080Psf,2K)
- Dual High Definition 9-inch(800x480) 16.7MegaPixel Wide Screens
- 4RU of a standard EIA 19inch rack
- Assignable Remote Control
- H/V Delay
- Analog Stereo Audio Out (Phone Jack)
- Internal Left,Right Speaker (2 x 1W)
- Blue Only & Monochrome
- Wide Variety of Markers & Safety Areas including user defined Markers
- HD/SD-SDI 2 Input & Active Loop Through.
- SDI Input Format Auto Detect.
- Variety of Analog Input (Composite,S-Video,YPbPr,RGB)
- Source ID Function (User Defined in OSD Function)
- Embedded Audio Level Meter(8Ch)
- Timecode Display
- WaveForm/Vector Scope(Only SDI)
- WaveForm/Vector Scope Full Size, Small Size Select

## PRM-483A



### Features

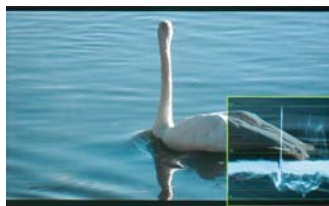
- Multi-Format Support (480i,576i,720P,1080i,1080P,1080Psf,2K)
- 3 High Resolution(800x480) 4.8-inch 16.7MegaPixel Wide Screens
- Small Footprint-occupies only 2RU of a standard EIA 19inch rack
- Assignable Remote Control
- H/V Delay
- Blue Only & Monochrome
- Wide Variety of Marker & Safety Area including user defined Marker
- HD/SD-SDI 2 Input & Active Loop Through.
- SDI Input Format Auto Detect.
- Composite Input & Loop Through.
- Composite Input Format Auto Detect.
- Source ID Function (User Defined in OSD Function)
- Embedded Audio Level Meter(8Ch)
- Timecode Display
- WaveForm/Vector Scope(Only SDI)
- WaveForm/Vector Scope Full Size, Small Size Select



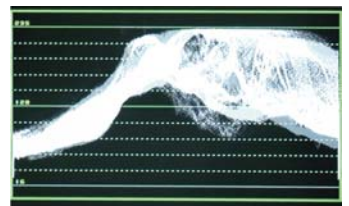
Vector scope



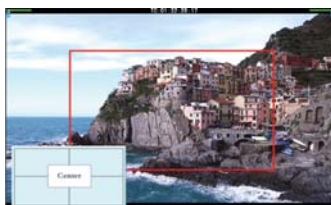
Vector scope Full size



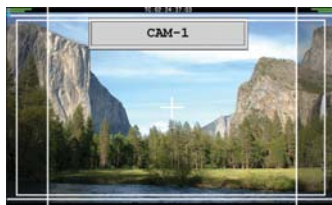
waveform



waveform Full size



Pixel by pixel



Source ID/Marker



Source Info

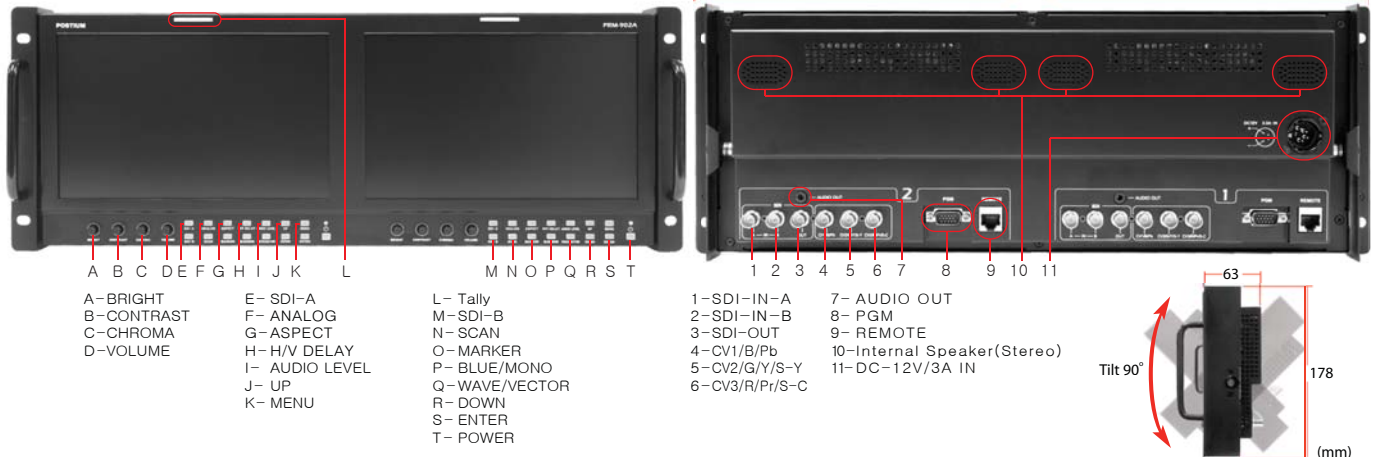


OSD

# The New Standard in LCD Rack Monitor

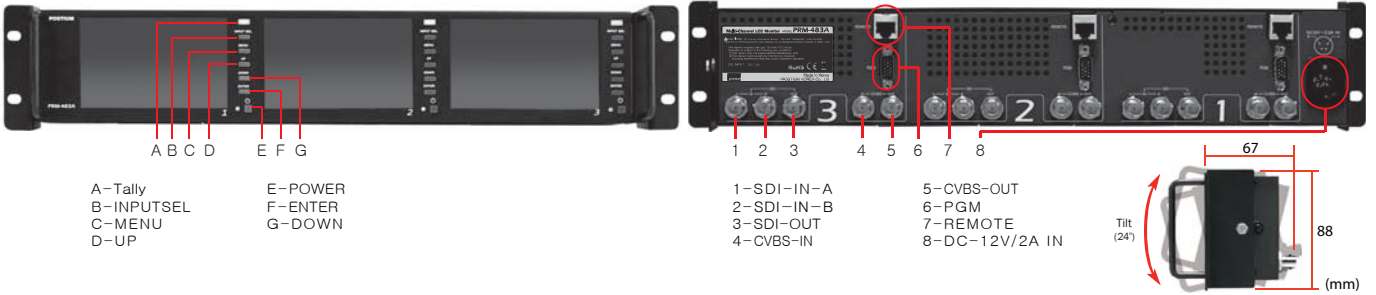
## PRM-902A

Dimensions( W x H x D ) : 481x178x62(mm), 4RU. Weight : 4.1 kg (8.8 lb)



## PRM-483A

Dimensions( W x H x D ) : 497x88x67(mm), 2RU. Weight : 2.1 kg (4.62 lb)



### Product Specifications

		PRM-902A	PRM-483A
Number of Screens		2	3
Input (1 Screen)	3 x BNC	3 Composite Input S-Video / RGB / Component	-
	2 x BNC	SDI 2 Channel Input	SDI 2 Channel Input
	1 x BNC	Composite Input	Composite Input
Output (1 Screen)	2 x BNC	SDI Channel / Composite Output	SDI Channel / Composite Output
	1 x Phone Jack	Analog Stereo Audio Out	-
	2 x Spsaker	2 x 1W	-
Input Signal	Analog	Composite (1.0Vpp with Sync) S-Video (1.0Vpp Ywith Sync, 0.268Vpp (c)) Component(1.0Vpp Ywith Sync, 0.7Vpp (Pb,Pr)) RGB(1.0Vpp Gwith Sync, 0.7Vpp (B,R))	Composite (1.0Vpp with Sync)
	HD-SDI	1.485 Gbps	1.485 Gbps
	SD-SDI	270 Mbps	270 Mbps
SDI Input Signal Formats	SMPTE-274	1080i (60/59.94/50)	1080i (60/59.94/50)
		1080P (30/29.97/25/24/24sF/23.98/23.98sF)	1080P (30/29.97/25/24/24sF/23.98/23.98sF)
	SMPTE-296M	720P (23.98/24/25/29.97/30/50/59.94/60)	720P (23.98/24/25/29.97/30/50/59.94/60)
	SMPTE-260M	1035i (60/59.94)	1035i (60/59.94)
	SMPTE-125M	480i (59.94)	480i (59.94)
	ITU-R.BT.656	576i (50)	576i (50)
	2K Format	2048 x 1080 (23.98psf/24psf/23.98p/24p)	2048 x 1080 (23.98psf/24psf/23.98p/24p)
CVBS Input	NTSC (525 / 59.94i), PAL (625/50i)		
S-Video Input	NTSC (525 / 59.94i), PAL (625/50i)		
Component, RGB(SOG) Input	480i(59.94), 576i(50), 480P(59.94), 576P(50)		-
	1080i(60/59.94/50)		-
	1080P(30/29.97/25/24/24sF/23.98/23.98sF)		-
	720P(50/59.94/60)		-
LCD	Size	9 inch	4.8 inch
	Resolution	800 x 480 (15 : 9)	800 x 480 (15 : 9)
	Pixel Pitch	0.246(H) x 0.246(V) mm	0.13(H) x 0.13(V) mm
	Color	16.7M (True), 24bit	16.7M (True), 24bit
	Viewing Angle	H : 160 degrees	H : 130 degrees
		V : 140 degrees	V : 110 degrees
	Luminance of White	600cd (center)	350cd (center)
Contrast	600 : 1	300 : 1	
Power	12V DC. 3A		
Power Consumption (Approx)	36 Watts		
Operating Temperature	0°C to 40°C (32°F to 104°F)		
Storage Temperature	-30°C to 50°C (-22°F to 122°F)		
Accessory	DC Power Adaptor		



**POSTIUM KOREA Co., Ltd.**  
[www.postium.com](http://www.postium.com) / [www.postiumusa.com](http://www.postiumusa.com)

Postium Korea  
Postium Bldg. 433-34 Kalhyun-Dong Eunpyung-gu, Seoul, Korea 122-811  
Phone : +82.2.354.6055. Fax : +82.2.354.6056

Postium USA  
910 W. Alameda Ave. Burbank, CA 91506  
Tel: +1 (818) 567-4900. Fax: +1 (818) 567-4903. [sales@postiumusa.com](mailto:sales@postiumusa.com)